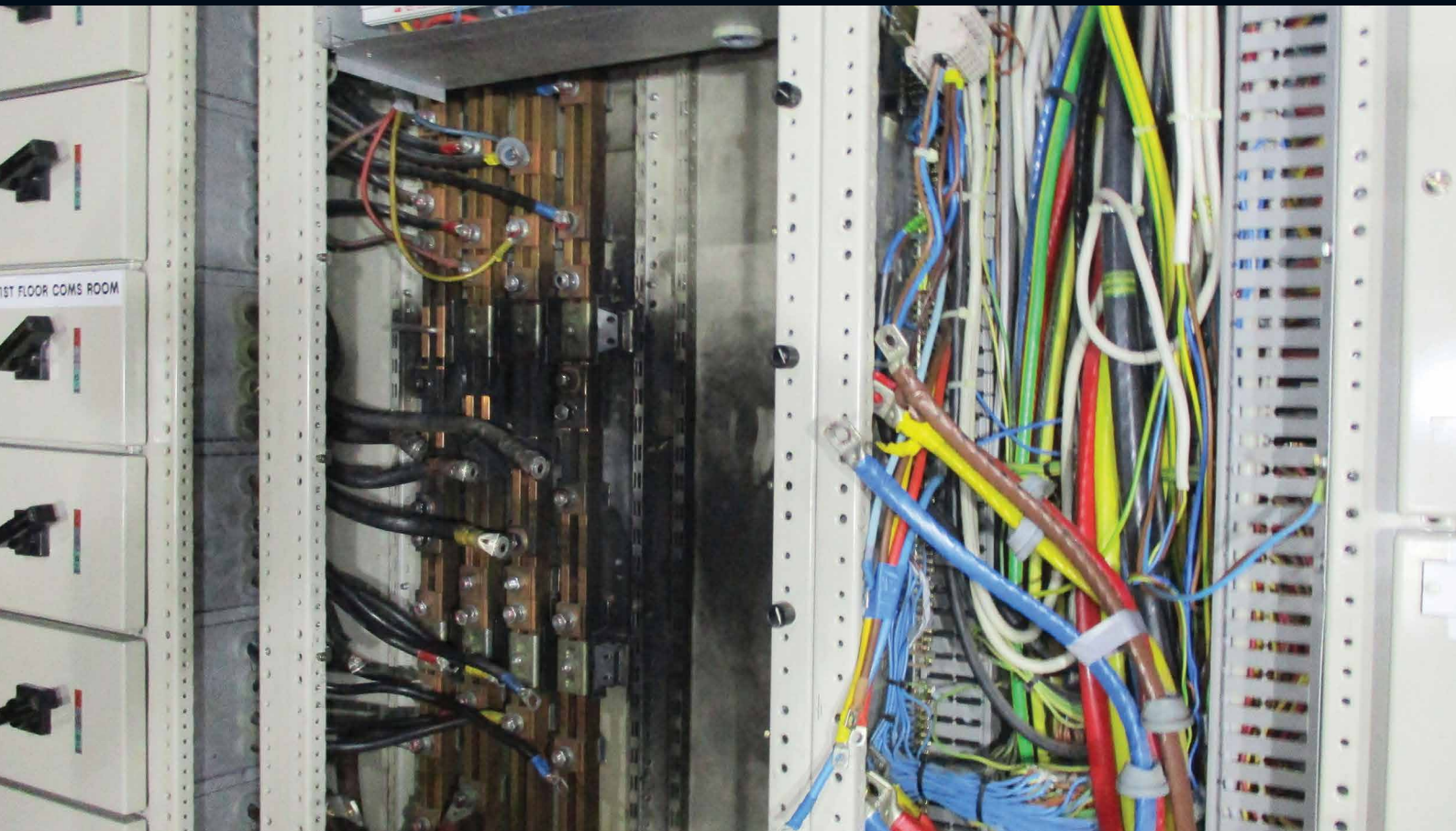


# **POLARICETECH**

**Dry Ice Blasting Specialists**



**RESTORING ELECTRICAL DISTRIBUTION  
BOARDS & SWITCHGEAR POST-FLASHOVER  
WITH DRY ICE CLEANING**

**[www.polaricetech.ie](http://www.polaricetech.ie)**



# RESTORING ELECTRICAL DISTRIBUTION BOARDS AND SWITCHGEAR POST-FLASHOVER WITH DRY ICE CLEANING

- Removes contaminants post-flashover
- Restores efficiency
- Increased IR readings
- Non-conductive, moisture free
- Non-abrasive

In electrical equipment, flashovers can sometimes occur due to a build up of contaminants, such as dust, grime and product and often the age of the equipment. This can result in a reduction in IR readings or possible even catastrophic failure and significant production downtime.

If a flashover occurs, Dry Ice Cleaning can restore the electrical equipment to efficiency through the removal of contaminants from electrical distribution boards and switchgear. This has significant cost-savings, as it avoids the need for component replacement.



A PORTABLE CONTAINMENT UNIT IS ERECTED AROUND THE WORKS AREA, PREVENTING CROSS-CONTAMINATION OF ANY HAZARDOUS MATERIAL WHILE DRY ICE CLEANING

## How is Dry Ice Cleaning suited to restoring post-flashover?

Dry Ice Cleaning is a non-conductive, moisture free process, and therefore safe to use on sensitive and delicate electrical equipment and components.

The process is non-abrasive, and will not cause damage to delicate electrical components, even post-flashover. Dry Ice pellets are used for gently removing contaminant from sensitive and delicate components.

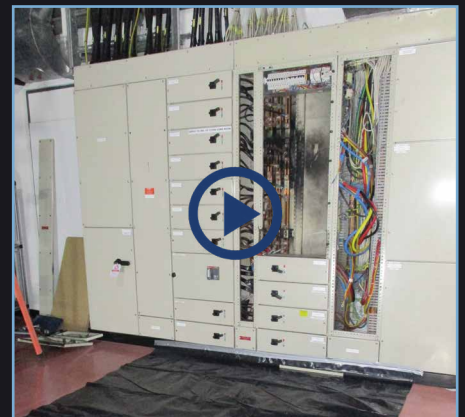
Dry Ice Cleaning produces no secondary waste stream, minimising clean up and associated costs. This also eliminates costs associated with disposal of hazardous secondary waste.

## How can Polar IceTech help?

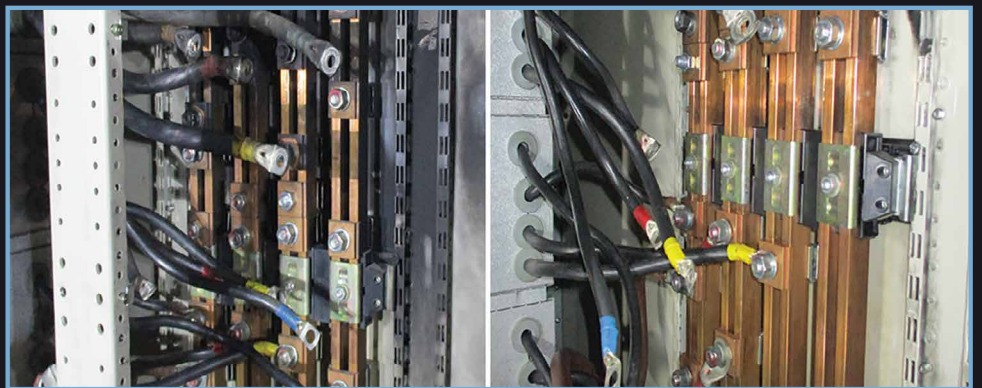
We at Polar IceTech are Dry Ice Blasting Specialists with close to 15 years of experience working with leading global companies.

We have in-depth experience cleaning sensitive electrical equipment and components safely and efficiently, and our teams are highly trained in this area. We take all necessary health and safety precautions with our tailored contract service solutions.

For more about Dry Ice Cleaning  
[www.polaricetech.ie](http://www.polaricetech.ie)



CLICK ON THE IMAGE TO WATCH THE RESTORING OF ELECTRICAL EQUIPMENT POST-FLASHOVER



POST-FLASHOVER SWITCHGEAR BEFORE AND AFTER DRY ICE CLEANING

Multi Award Winning Company



**POLAR ICETECH**  
 Dry Ice Blasting Specialists

[www.polaricetech.ie](http://www.polaricetech.ie)

T (ROI): +353 (0)21 4232020

T (NI / UK): +44 (0)28 95680037